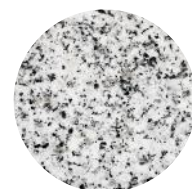


# Turnkey INTERIOR SELECTION





# *Kitchen* **OPTIONS**

# KITCHEN FAUCETS

## Standard Turnkey Options



Kitchen Faucet  
Matte Black



Kitchen Faucet  
Brushed Nickel



Kitchen Faucet  
Chrome



Kitchen Faucet  
Matte Black



Kitchen Faucet  
Brushed Nickel



Kitchen Faucet  
Chrome

# KITCHEN SINKS

Standard Turnkey Options



Stainless Steel  
Single Bowl Undermount



Stainless Steel  
Double Bowl Undermount

## UPGRADES



Stainless Steel  
Single Bowl  
Farmhouse Sink



Black  
Single Bowl  
Farmhouse Sink



White  
Single Bowl  
Farmhouse Sink



## KITCHEN CABINETS

Standard Turnkey Options



Greystone

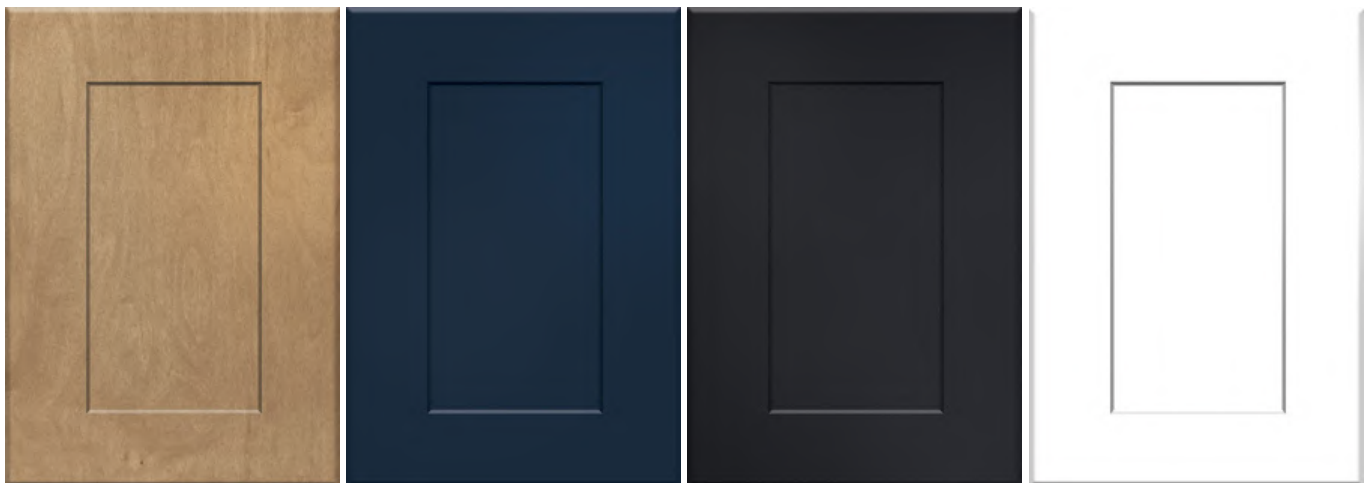
Dorian

Oyster

White

## UPGRADES

Craftsman Design



Sand

Naval

Black

White

**Note:** Cabinetry upgrades will need to be custom-calculated and quoted based on blueprints.  
All cabinet colors are a max of two per home.

# KITCHEN COUNTERTOPS

## Standard Turnkey Options



Uba Tuba Granite



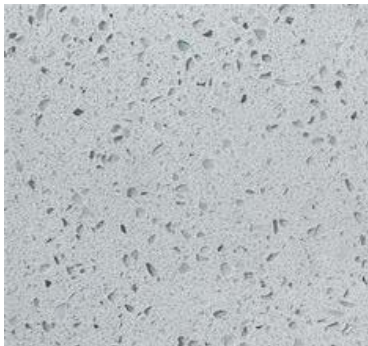
Steel Gray Granite



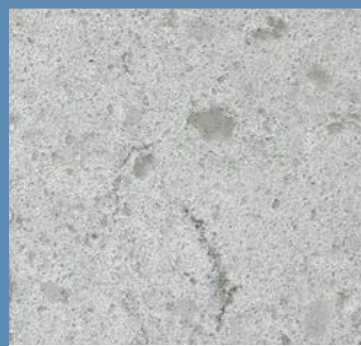
Santa Cecilia Granite



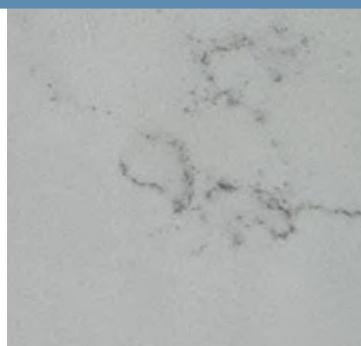
Luna Pearl Granite



Eyes White Quartz



Argento Brown  
Quartz



Niagara Quartz



Negresco  
Granite

## UPGRADES

## DELUXE UPGRADES



Excalibur Granite



Namib Fantasy  
Granite

**Note:** Countertop upgrades will need to be custom-calculated and quoted based on blueprints.

All countertop colors are a max of two per home.



# Bathroom OPTIONS



# VANITY LIGHTING

Standard Turnkey Options

Select one of the following:





## VANITY SINK SHAPES

Standard Turnkey Options

Select one of the following:



Oval Shape



Rectangular Shape

## VANITY FAUCETS

Standard Turnkey Options



Bathroom Faucet  
Matte Black



Bathroom Faucet  
Brushed Nickel



Bathroom Faucet  
Chrome

## VANITY CABINETS

Standard Turnkey Options



Greystone

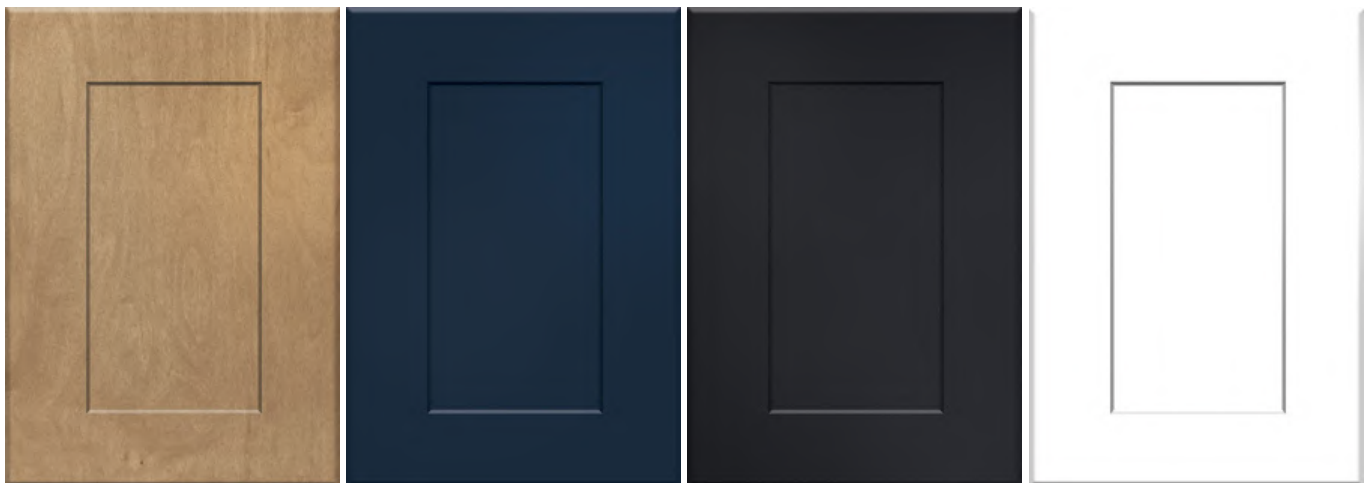
Dorian

Oyster

White

## UPGRADES

Craftsman Design



Sand

Naval

Black

White

**Note:** Cabinetry upgrades will need to be custom-calculated and quoted based on blueprints.  
All cabinet colors are a max of two per home.

# VANITY COUNTERTOPS

## Standard Turnkey Options



Uba Tuba Granite



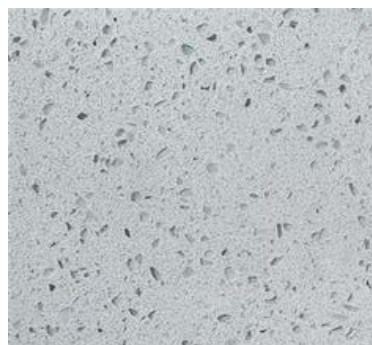
Steel Gray Granite



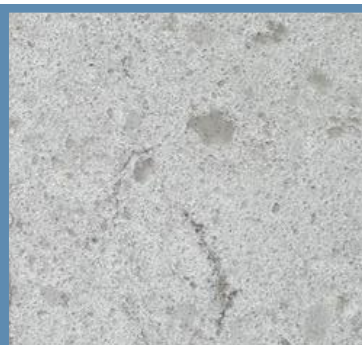
Santa Cecilia Granite



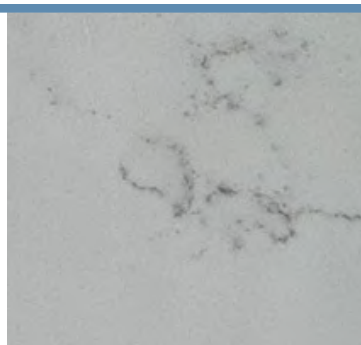
Luna Pearl Granite



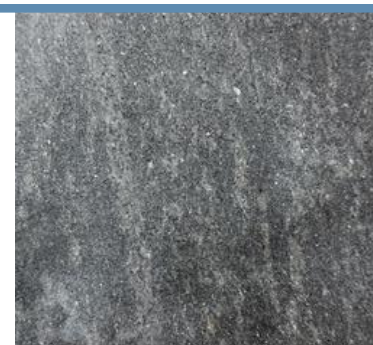
Eyes White Quartz



Argento Brown  
Quartz



Niagara Quartz



Negresco  
Granite

## UPGRADES

## DELUXE UPGRADES



Excalibur Granite



Namib Fantasy  
Granite

**Note:** Countertop upgrades will need to be custom-calculated and quoted based on blueprints.

All countertop colors are a max of two per home.



# BATHROOM SHOWERS

Standard Turnkey Options

Select one of the following:



Shower Faucet  
Matte Black



Shower Faucet  
Brushed Nickel



Shower Faucet  
Chrome

Select one of the following per bathroom:



Fiberglass  
Walk-In Shower



Fiberglass  
40 gal Tub



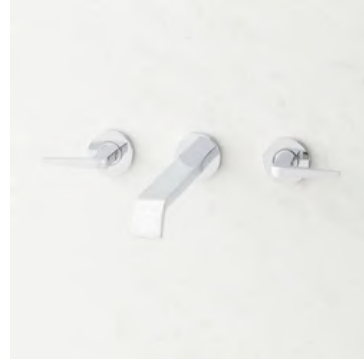
Fiberglass  
51 gal Tub

# BATHTUBS

## Standard Turnkey Options

*\*Included in turnkey for select blueprints*

**Select one of the following:**



59 x 33 in. Freestanding Bathtub  
with Center Drain in White

## UPGRADES

**Select one of  
the following:**

Floor Mount  
Tub Faucet



Matte Black



Brushed Nickel



Chrome



59 x 32 in. Freestanding Bathtub  
with End Drain in White

# BATHROOM TOILETS

## Standard Turnkey Options

Select one of the following:



**Note:** All options are elongated and ADA compliant.





# *Lighting* **OPTIONS**

## 52" CEILING FANS

Standard Turnkey Options



## 60" CEILING FANS

Available Upgrades



**Note:** Ceiling fans are included in every bedroom and one in the living room

## INTERIOR CAN LIGHTING

Standard Turnkey Options



Soft White 3k Recessed LED Can Lights  
OR  
Daylight 5k Recessed LED Can Lights

## EXTERIOR LIGHTING

Standard Turnkey Options

Select one of the following:



Black  
Lantern



Black Short  
Gooseneck Light



Black Long  
Gooseneck Light



Galvanized Short  
Gooseneck Light



Galvanized Long  
Gooseneck Light

## EXTERIOR FLOOD LIGHTS

Standard Turnkey Options

Select one of the following:



Black



White



# *Interior Finish* **OPTIONS**



## INTERIOR DOORS

### Standard Turnkey Options



Cheyenne Door Style



Craftsmen Door Style



2-Panel Door Style

## DOOR KNOBS

### Standard Turnkey Options



Matte Black



Matte Black Flat Bar



Matte Black Round Rod



Matte Black Wave



Satin Nickel



Satin Nickel Flat Bar



Satin Nickel Round Rod



Satin Nickel Wave

# LVP FLOORING

## Standard Turnkey Options

**Note:** LVP, or Luxury Vinyl Plank, flooring is a versatile and popular flooring option known for its realistic wood-like appearance and exceptional durability. Made from multiple layers of vinyl, LVP is designed to mimic the look and feel of hardwood flooring while offering several practical advantages.



Driftwood



Timberwood



Sandlewood



Barnwood

## FARMHOUSE TRIM

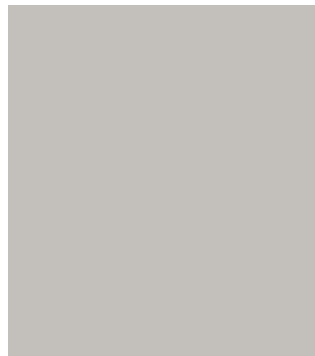
Standard Turnkey Options



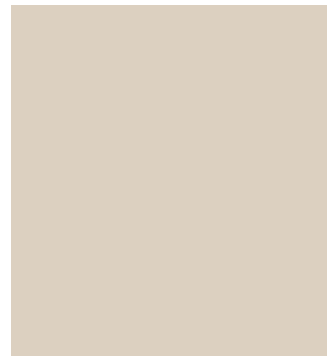
1x4 Door & Window Casing  
1x6 Baseboards

## INTERIOR WALL COLOR

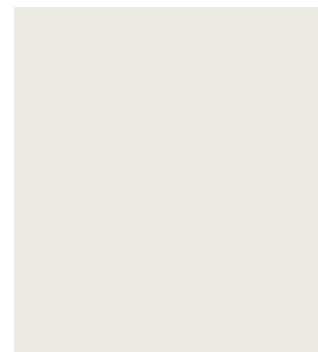
Standard Turnkey Options



Light French Gray



Canvas Tan



Alabaster White



---

# HOT WATER HEATERS

---

## Standard Turnkey Options



50 Gallon Capacity 4.5 kW Heating Input  
Short Electric Water Heater

---

## UPGRADES

---



Tall 40 MBH Low NOx Atmospheric Vent  
Natural Gas Water Heater



Navien NPE-A2 Series 199 MBH  
Condensing Natural Gas  
Tankless Water Heater  
(with NO recirculation pump)



Navien NPE-A2 Series 199 MBH  
Condensing Natural Gas  
Tankless Water Heater  
(with recirculation pump)

**Note:** An on-demand water heater recirculation pump is a device that quickly circulates hot water through your plumbing system only when needed, reducing water waste and providing near-instant hot water at fixtures like sinks and showers.

# FIREPLACES

## Standard Turnkey Options

Fireplace framing is included if in the original turnkey blueprint.



## UPGRADES

### Fireplace Inserts



Wood Burning Fireplace Insert



Gas Fireplace Insert



[WWW.SUMMERTOWNMETALS.COM](http://WWW.SUMMERTOWNMETALS.COM)