

SUMMERTOWN METALS[®] LLC

PAINT THAT LASTS A

Lifetime

NOW FEATURING Board & Batten and Standing-Seam. See other side for additional information and profiles.



DISTRESSED ROUGH SAWN CEDAR



BURGUNDY



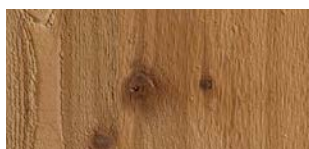
DARK RED



BRIGHT RED



BARN RED



ROUGH SAWN CEDAR



COPPER METALLIC



TAN



STONE



IVORY



GRAY ROUGH SAWN CEDAR



LIGHT GRAY



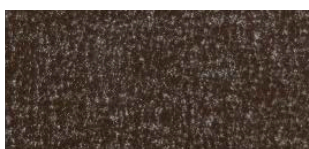
GALVALUME



PATINA GREEN



FOREST GREEN



FROST BRONZE



BRONZE



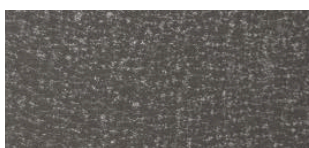
BROWN



BUCKSKIN



CLAY



FROST CHARCOAL



COUNTY CHARCOAL



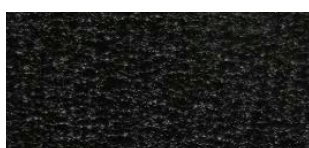
BLUE CHARCOAL



HAWAIIAN BLUE



GALLERY BLUE



FROST BLACK



GLOSS BLACK



MATTE BLACK



BONE WHITE



PURE WHITE



DURABLE

Industry's strongest and best performing SMP paint system



RESISTANT

Excellent resistance to moisture, UV exposure, and abrasion

AkzoNobel

CERAM-A-STAR[®] 1050



COLORFUL

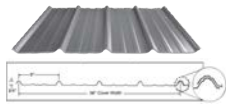
High quality gloss retention and color stability



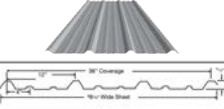
PROVEN

Extensively tested for the best quality and performance

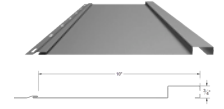
Color Disclaimer: While we make every effort to provide clear and accurate representations of our metal colors, exact matches cannot be guaranteed due to variations in screen displays, lighting, and print settings. For the most accurate depiction of our finishes, we strongly recommend requesting physical metal color samples from your building specialist before making your final selection.



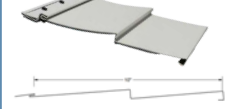
Tuff-Rib



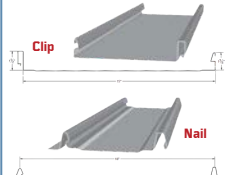
PBR Profile



Board & Batten



Lap Siding



Standing Seam (Clip or Nail)

| | Tuff-Rib | PBR Profile | Board & Batten | Lap Siding | Standing Seam (Clip or Nail) |
|------------------------------------|----------|-------------|----------------|------------|------------------------------|
| Barn Red | 29/26 | 26 | | | |
| Blue Charcoal | 29/26 | | 26 | 26 | 26 |
| Bone White | 29/26 | 26 | | | |
| Bright Red | 29/26 | 26 | | | |
| Bronze | 29/26 | 26 | 26 | 26 | 26 |
| Brown | 29/26 | 26 | | | |
| Buckskin | 29/26 | 26 | 26 | 26 | 26 |
| Burgundy | 29 | | | | |
| Clay | 29/26 | 26 | 26 | 26 | 26 |
| Copper Metallic | 29/26 | 26 | | | |
| County Charcoal | 29/26 | 26 | 26 | 26 | 26 |
| Dark Red | 29/26 | 26 | 26 | 26 | 26 |
| Distressed Rough Sawn Cedar | 26 | | 26 | 26 | 26 |
| Forest Green | 29/26 | 26 | | | |
| Frost Black | 29/26 | | 26 | 26 | 26 |
| Frost Bronze | 29 | | | | |
| Frost Charcoal | 29/26 | | 26 | 26 | 26 |
| Gallery Blue | 29 | | | | |
| Galvalume | 29/26 | 26 | 26 | 26 | 26 |
| Gloss Black | 29/26 | 26 | 26 | 26 | 26 |
| Gray Rough Sawn Cedar | 26 | | 26 | 26 | 26 |
| Hawaiian Blue | 29 | | | | |
| Ivory | 29 | | | | |
| Light Gray | 29/26 | 26 | 26 | 26 | 26 |
| Matte Black | 29/26 | 26 | 26 | 26 | 26 |
| Patina Green | 29/26 | | 26 | 26 | 26 |
| Pure White | 29/26 | 26 | 26 | 26 | 26 |
| Rough Sawn Cedar | 26 | | 26 | 26 | 26 |
| Stone | 29/26 | 26 | | | |
| Tan | 29/26 | 26 | | | |

Questions? Give us a call!

515-786-2276



**SUMMERTOWN,
TENNESSEE**

**HOPKINSVILLE,
KENTUCKY**

**HAYDEN,
ALABAMA**

**MORRISTOWN,
TENNESSEE**

WWW.SUMMERTOWNMETALS.COM



Restrictions Apply